

# Pollworker Points...

June 2008

## SAVE THE DAY!

### THE 2008 TRAINING SCHEDULE IS COMPLETE

The following dates are for "task-specific" trainings for both the primary and general elections. Prior to each election, pollworkers are required to attend ONE of the task-specific trainings for their assigned position. NEW EVID Operators/Assistants are the exception. New EVID personnel are required to attend two hands-on classes prior to the August 26th Primary Election. Please direct all questions regarding the training schedule to your pollworker coordinator as soon as possible. **Remember:** Your on-line training course must be completed in order to be assigned to a task-specific training.

#### Voting System Specialists

##### **Myrtle Lake Baptist Church - Central Pasco**

*Primary -*

August 2<sup>nd</sup> - 8:30 a.m. to 12:30 p.m.

August 2<sup>nd</sup> - 1:30 p.m. to 5:30 p.m.

##### **Location: To Be Announced - Central Pasco**

*General -*

October 11<sup>th</sup> - 8:30 a.m. to 12:30 p.m.

October 11<sup>th</sup> - 1:30 p.m. to 5:30 p.m.

##### **Pasco-Hernando Community College - East Pasco**

*Primary -*

August 4<sup>th</sup> or 5<sup>th</sup> - 8:30 a.m. to 12:30 p.m.

August 4<sup>th</sup> - 1:30 p.m. to 5:30 p.m.

*General -*

October 13<sup>th</sup> or 14<sup>th</sup> - 8:30 a.m. to 12:30 p.m.

October 13<sup>th</sup> - 1:30 p.m. to 5:30 p.m.

##### **St. Anne's Catholic Church - West Pasco**

*Primary -*

July 28<sup>th</sup>, 29<sup>th</sup>, 30<sup>th</sup>, or 31<sup>st</sup> - 8:30 a.m. to 12:30 p.m.

July 28<sup>th</sup>, 29<sup>th</sup>, 30<sup>th</sup>, or 31<sup>st</sup> - 1:30 p.m. to 5:30 p.m.

##### **Pasco-Hernando Community College - West Pasco**

*General -*

October 6<sup>th</sup>, 7<sup>th</sup>, 8<sup>th</sup>, or 9<sup>th</sup> - 8:30 a.m. to 12:30 p.m.

October 6<sup>th</sup>, 7<sup>th</sup>, 8<sup>th</sup>, or 9<sup>th</sup> - 1:30 p.m. to 5:30 p.m.

#### Attendants and Ballot Distributors

##### **Myrtle Lake Baptist Church - Central Pasco**

*Primary -*

August 2<sup>nd</sup> - 8:30 a.m. to 10:30 a.m.

August 2<sup>nd</sup> - 1:30 p.m. to 3:30 p.m.

##### **Location: To Be Announced - Central Pasco**

*General -*

October 11<sup>th</sup> - 8:30 a.m. to 10:30 a.m.

October 11<sup>th</sup> - 1:30 p.m. to 3:30 p.m.

##### **Pasco-Hernando Community College - East Pasco**

*Primary -*

August 4<sup>th</sup> or 5<sup>th</sup> - 8:30 a.m. to 10:30 a.m.

August 4<sup>th</sup> - 1:30 p.m. to 3:30 p.m.

*General -*

October 13<sup>th</sup> or 14<sup>th</sup> - 8:30 a.m. to 10:30 a.m.

October 13<sup>th</sup> - 1:30 p.m. to 3:30 p.m.

##### **St. Anne's Catholic Church - West Pasco**

*Primary -*

July 28<sup>th</sup>, 29<sup>th</sup>, 30<sup>th</sup>, or 31<sup>st</sup> - 8:30 a.m. to 10:30 a.m.

July 28<sup>th</sup>, 29<sup>th</sup>, 30<sup>th</sup>, or 31<sup>st</sup> - 1:30 p.m. to 3:30 p.m.

##### **Pasco-Hernando Community College - West Pasco**

*General -*

October 6<sup>th</sup>, 7<sup>th</sup>, 8<sup>th</sup>, or 9<sup>th</sup> - 8:30 a.m. to 10:30 a.m.

October 6<sup>th</sup>, 7<sup>th</sup>, 8<sup>th</sup>, or 9<sup>th</sup> - 1:30 p.m. to 3:30 p.m.

#### ALL Precinct Supervisors

##### **Pasco Detention Center - Central Pasco**

*Primary -*

August 13<sup>th</sup>, 14<sup>th</sup>, 15<sup>th</sup> or 16<sup>th</sup> - 8:30 a.m. to 5:30 p.m.

*General -*

October 22<sup>nd</sup>, 23<sup>rd</sup>, 24<sup>th</sup>, or 25<sup>th</sup> - 8:30 a.m. to 5:30 p.m.

#### EVID Specialists/Operators/Assistants

##### **Elections Service Center - East Pasco**

*Primary -*

July 28<sup>th</sup>, 29<sup>th</sup>, or 30<sup>th</sup> - 8:30 a.m. to 12:30 p.m.

July 28<sup>th</sup>, 29<sup>th</sup>, or 30<sup>th</sup> - 1:30 p.m. to 5:30 p.m.

*General -*

October 6<sup>th</sup>, 7<sup>th</sup>, or 8<sup>th</sup> - 8:30 a.m. to 12:30 p.m.

October 6<sup>th</sup>, 7<sup>th</sup>, or 8<sup>th</sup> - 1:30 p.m. to 5:30 p.m.

##### **Myrtle Lake Baptist Church - Central Pasco**

*Primary -*

July 31<sup>st</sup> or August 1<sup>st</sup> - 8:30 a.m. to 12:30 p.m.

July 31<sup>st</sup> or August 1<sup>st</sup> - 1:30 p.m. to 5:30 p.m.

*General -*

October 9<sup>th</sup> or 10<sup>th</sup> - 8:30 a.m. to 12:30 p.m.

October 9<sup>th</sup> or 10<sup>th</sup> - 1:30 p.m. to 5:30 p.m.

##### **Career Central - West Pasco**

*Primary -*

August 5<sup>th</sup>, 6<sup>th</sup>, 7<sup>th</sup>, 8<sup>th</sup>, or 9<sup>th</sup> - 8:30 a.m. to 12:30 p.m.

August 5<sup>th</sup>, 6<sup>th</sup>, 7<sup>th</sup>, 8<sup>th</sup>, or 9<sup>th</sup> - 1:30 p.m. to 5:30 p.m.

##### **Pasco-Hernando Community College - West Pasco**

*General -*

October 14<sup>th</sup>, 15<sup>th</sup>, 16<sup>th</sup>, 17<sup>th</sup>, or 18<sup>th</sup> - 8:30 a.m.-12:30 p.m.

October 14<sup>th</sup>, 15<sup>th</sup>, 16<sup>th</sup>, 17<sup>th</sup>, or 18<sup>th</sup> - 1:30 p.m.- 5:30 p.m.

**\*New EVID workers will also attend a beginner's course July 14<sup>th</sup>, 15<sup>th</sup>, 16<sup>th</sup>, 17<sup>th</sup>, or 18<sup>th</sup> according to location.**

#### Poll Deputies

##### **Pasco-Hernando Community College - West Pasco**

*Primary -*

August 11<sup>th</sup> - 9:00 a.m. to 11:00 a.m.

*General -*

October 20<sup>th</sup> - 9:00 a.m. to 11:00 a.m.

##### **Pasco-Hernando Community College - East Pasco**

*Primary -*

August 12<sup>th</sup> - 9:00 a.m. to 11:00 a.m.

*General -*

October 21<sup>st</sup> - 9:00 a.m. to 11:00 a.m.

##### **Myrtle Lake Baptist Church - Central Pasco**

*Primary -*

August 12<sup>th</sup> - 2:00 p.m. to 4:00 p.m.

*General -*

October 21<sup>st</sup> - 2:00 p.m. to 4:00 p.m.

**Brian E. Corley**  
Supervisor of Elections  
Pasco County  
P. O. Box 300  
Dade City, FL 33526-0300

PRSR STD  
US POSTAGE  
PAID  
Permit No. 7812  
Tampa FL

**EAST PASCO**  
(352) 521-4302

**CENTRAL PASCO**  
(813) 929-1288

**WESLEY CHAPEL**  
(813) 929-1392

**WEST PASCO**  
(727) 847-8162

## ELECTION DATES

Primary Election  
August 26, 2008

General Election  
November 4, 2008

### FALL ELECTIONS

Are you unavailable to work the August 26<sup>th</sup> Primary Election and/or the November 4<sup>th</sup> General Election? Preparations are underway to prepare for trainings and staff all polling locations. Your pollworker coordinators need to know your availability in order to make assignments and notify you of the upcoming trainings. Please call our office **NOW** if you will be unable to work any of the fall elections.

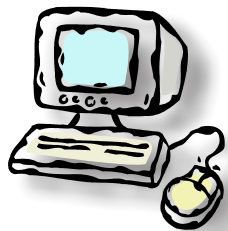
### VOTE EARLY OR BY ABSENTEE

Just a reminder to those of you who work outside your home precinct to vote early or by absentee! Visit [pascovotes.com](http://pascovotes.com) for early voting locations.

Early voting begins Monday, August 11, 2008 for the August primary.

## ON-LINE POLLWORKER TRAINING for 2008 DEADLINE June 30

Why put off 'til tomorrow what you can do today?  
No time like the present!



Sound familiar? Many of you have not completed the mandatory on-line training and the deadline is quickly approaching! You **MUST** complete the on-line training in order to be eligible to work the fall elections. Work assignments are made from a list of workers who have completed their on-line training. Make sure you are on the list, and you will receive notification of your task-specific training schedule soon!

If you do not have access to a computer, there is one available for you at four Supervisor of Elections' offices. Call 800-851-8754 to schedule computer time today!

### DID YOU KNOW . . .

On-line training is now being used throughout the United States, and that's partly due to its success in Pasco County! As pioneers in the field, you can be proud that you were some of the first to employ this innovative approach to training. Your experience provided valuable feedback to SOE Software, the company that custom-designed our on-line training program in 2006, that enabled them to market this product nationwide.

One of the biggest benefits to an on-line training platform is that the training is consistent and at a learning pace you set yourselves. Many of you have commented on the convenience of being able to complete the training on your own schedule in the convenience of your home. Your training is always a top priority for us, and we continually strive to improve our methods and manuals. Your training insures our success on election day, and we thank you for your service and willing spirit!

[pascovotes.com](http://pascovotes.com)



**Brian E. Corley**  
Supervisor of Elections  
P. O. Box 300  
Dade City, FL 33526

★★ **FREEDOM**  
Requires Responsibility  
**Vote 2008**