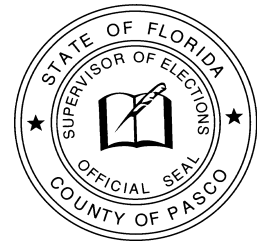


VOTE NOTES

KURT S. BROWNING

PASCO COUNTY
SUPERVISOR OF ELECTIONS



January, 2001

Quarterly Publication



SEARCHING FOR A SOLUTION...

What will be the number one item on the agenda for Pasco County Supervisor of Elections Kurt Browning? Quite possibly, the pursuit of new voting equipment. Criteria for any new equipment purchased by Pasco County will include, but not be limited to, accuracy, efficiency, cost effectiveness and security.

Several types of voting equipment will be researched before any proposal will go before the Board of County Commissioners. While Mr. Browning is leaning toward newer technologies, here is a brief look at current systems used throughout the country:

PAPER BALLOTS - Paper of varying stock weight has the names of all candidates and issues printed on the paper. A voter then marks their choices in private before dropping their voted paper ballot into a sealed ballot box. After the election, ballots are tabulated by hand by election officials. In 1889, New York became the first American State to use paper ballots. Currently, only 1.7% of the registered voters in the United States use paper ballots. They are primarily used in small communities and rural areas. Only one county in Florida uses this system.

MECHANICAL LEVER MACHINES - With this machine, each candidate or issue is assigned to a specific lever within a rectangular array of levers located on the front of the machine. When the voter activates the machine, a privacy curtain is automatically released. The voter pulls down the corresponding lever(s) to indicate their choices. When the voter is ready to exit the booth, they pull a lever that opens the curtain and automatically returns the levers on the front of the machine to their original position while a counter wheel inside the machine keeps track of vote totals for each position. This machine was first used in New York in 1892. By 1960, over half of the country used these machines. One county in Florida still uses this system.

PUNCHCARDS - This system uses a clipboard-size device for recording votes along with the voter's ballot card. Through the device, voters punch holes in the cards to indicate their choices. When the voter is finished, they take the card and place it in a sealed ballot box or a computer tabulating machine. Votomatics and Datavotes are two common types of punchcards. The punchcard was first used in Georgia in the early sixties. In the 1996 Presidential election, some variation of the punchcard system was used by over 37% of registered voters in the United States. There are 24 counties in Florida currently using the punchcard.

MARKSENSE - These machines are known as optical scanners that use a ballot card with preprinted candidates and issues. Each voter fills in or completes a circle, oval or incomplete arrow next to their choices. The ballots can then be placed in a sealed box or fed through a computer tabulating device at the precinct. Most people can associate this type of technology with a standardized test or lottery. This type of system was used by over 24% of the registered voters in 1996 and appears to be more popular each year. Florida currently has 41 counties using a marksense system.

DIRECT RECORDING EQUIPMENT - This is an electronic evolution of the mechanical lever system. The DRE system uses a touch-screen or push-button device to electronically store their choices. The choices made by a voter are stored in the machines through a memory cartridge, diskette or smart-card. Only 7.7% of registered voters in the United States used a DRE system during the 1996 election.

From the Supervisor of Elections...



The 2000 election year was absolutely unbelievable! As the world watched the 36-day ordeal unfold, each day seemed to present a whole new set of challenges. From the automatic machine recount to the lawsuits over canvassing overseas absentee ballots to the manual examination and counting of undervoted ballots. In December, my office dealt with hundreds of phone calls and hundreds of e-mails concerning the issues at hand.

Pasco County came under the microscope very quickly and fared extremely well. The challenges, questions, calls, e-mails, and lawsuits have caused us to rethink our procedures and policies regarding each area of my office. Work groups have been established to re-evaluate these areas and to make recommendations for changes and improvements.

I am confident that after having survived 2000, future election years will never be like any of the past. It remains to be the goal of my staff and me to provide the very best service to our residents. You can count on that!



ON THE MOVE...



The Pasco County Supervisor of Elections' office in Dade City has relocated to the East Pasco Government Center. The physical address of the new government center is 14326 6th Street. The Supervisor of Elections' office is located on the second floor in Suite 200. The new mailing address is P. O. Box 300, Dade City, FL 33526-0300.

PICKING UP THE PIECES...



The telephones are eerily quiet. The front counters are strangely empty. After a grueling election, it appears the Pasco County Elections Office can begin picking up the pieces. Moving on could take some time considering the mountain of rubble left behind.

Countless residents visited Pasco's three election offices, as well as public libraries, public assistance facilities and area post offices, in order to register by the October 10th book closing deadline. The high volume of voter registrations contributed to a large increase in data entry work.

A record number of absentee ballot requests kept staff members at work well into the night on many occasions. The amount of absentee ballots returned to the elections office required more than 20 absentee board members for canvassing on election day.

Then there were the 6,000 plus phone calls on Election Day alone. Each call, logged by hand or by computer, must be reviewed separately and handled accordingly.

A normal routine usually resurfaces after election day. However, this election was anything but normal. The 36 days of post-election activity put the entire state under the microscope. Pasco County was no exception.

Our offices had visitors from Washington D.C., party headquarters, television and press crews as well as concerned citizens. Many people turned out for the initial machine recount, the meetings of the Canvassing Board and the court-ordered recount of "under votes."

Pasco fared well, surviving three lawsuits and public scrutiny. Look for new legislation from Tallahassee, along with revised policies and procedures from the supervisor of elections that will carry us into the 2002 election cycle.

WHO IS CHAD?

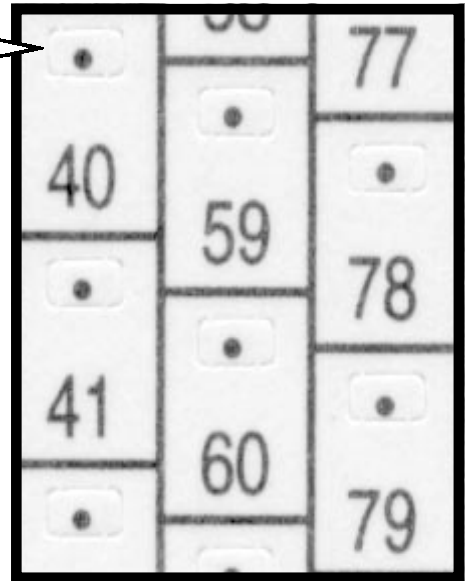
From dimpled chad to hanging chad, the November 7th General Election gave new meaning to punchcard debris. So who, or more precisely what, is chad? A chad is the small, rectangular box that detaches from a punchcard when voted.

If the box remains attached to the punchcard by a corner, it becomes a "hanging" chad. An attached, bulging chad that has been pierced by a stylus is called a "pregnant" chad. A bulging chad that has not been pierced is called a "dimpled" chad.

There are several other variations of chad, but any way you look at it, chad will be a central concern for several Florida counties.

There are four different types of voting equipment currently used in Florida; the optical scan system, the punchcard, mechanical voting machines and paper ballots. Pasco is one of 24 counties that utilizes the punchcard.

Kurt S. Browning, Supervisor of Elections of Pasco County, plans to advocate alternative voting equipment to his colleagues. Whether the state will require a universal system remains to be seen, but the elimination of chad will be a high priority.



GOVERNOR'S SELECT TASK FORCE ON ELECTION PROCEDURES, STANDARDS & TECHNOLOGY

Supervisor Kurt Browning has been appointed by Governor Jeb Bush to participate in the Governor's Select Task Force on Election Procedures, Standards and Technology. The task force consists of 21 members; ten Democrats, ten Republicans and one Non-partisan.

The members of the task force were chosen from a broad professional spectrum. The diverse group is reviewing all aspects of the election process. After reviewing all of the current procedures, standards and equipment concerns, the group's challenge will be to devise a proposal for election reform for the entire state.

The members are required to submit their proposal to the governor by March 1, 2001. Specific details will be highlighted in the April issue of VoteNotes.

Florida Ballot Review Under Way

A research firm representing several large news organizations began reviewing presidential overvoted and undervoted ballots in Pasco County on Monday, February 5, 2001 to create an independent record of the Florida Election. The statewide review is expected to take at least eight weeks to complete.



Pasco County Election employees assist the teams from the National Opinion Research Center.

quote of the quarter

"Let us never forget that government is ourselves and not an alien power over us. The ultimate rulers of our democracy are not a President and senators and congressmen and government officials, but the voters of this country." -- Franklin D. Roosevelt

Source: www.ctapc.larc.nasa.gov/know_it.htm

Did You Know?

That only 25% of those registered to vote, vote?

That means that every one of those votes counts as four votes.

source: nrst.com/didyou.htm

FSASE SCHOLARSHIP AVAILABLE



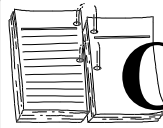
The Florida State Association of Supervisors of Elections will grant three scholarships to qualified candidates. Scholarship applications are available at all three county locations of the Supervisor of Elections and at pascovotes.com.

All applications and letters of recommendation must be filed with the supervisor of elections no later than March 21, 2001. Last year's award winners are eligible to make a second application. For more information, please contact the elections office.

REGISTRATION STATISTICS

Republican	91,834	40.6%
Democrat	90,351	40.0%
Other	43,846	19.4%
Total	226,031	

(As of February 9, 2001)



Calendar of Events

- February 19th - 25th Voter Registration Drive
Pasco County Fair
36722 State Road 52
Dade City
(Booth open 3:00 to 10:00 p.m.)
- April 3rd Pasco County High School Voter
Registration Contest
All Pasco County High Schools
9:00 a.m. to 1:00 p.m.
- April 7th Jellybean Jamboree
Land O' Lakes Community Center
9:00 a.m. to 12:00 noon
- Jellybean Jamboree
Odessa Park
1:00 to 4:00 p.m.
- April 10th Municipal Election
- April 13th Jellybean Jamboree
Veterans Memorial Park - Hudson
9:00 a.m. to 12:00 Noon
- April 14th Jellybean Jamboree
John S. Burks Park - Dade City
10:00 a.m. to 1:00 p.m.

KURT S. BROWNING

Supervisor of Elections
Pasco County
P. O. Box 300
Dade City, FL 33526-0300

Pre-Sorted
Standard Class
U.S. Postage
PAID
Dade City, FL
Permit No. 39